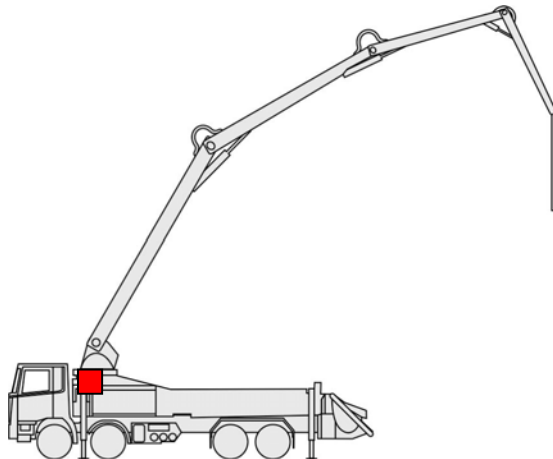


1 General

Slewing gear brake valves are used in concrete pump machines to enable precise, fine rotating movement.

1.1 Mounting Location (Recommendation)



Slewing gear brake valves are installed close to the slew-ring cylinder or the motor.

2 Function

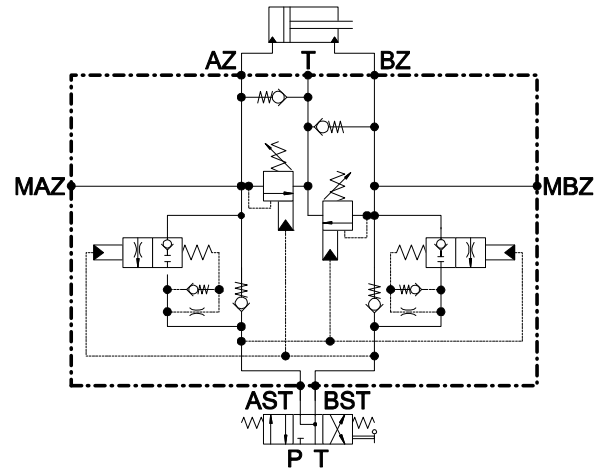
The slewing gear brake valve is closed and leakage free in its resting position. Free flow to the respective cylinder-/motor side is enabled by check valves. When flow is through the inlet, the drain valve is opened independent of the load-pressure. Depending on the inlet pressure, fine control openings are opened in stages opening the return flow. The release is actuated when the inlet pressure is increased between 240 and 280 bar. The cushioning unit in the drain valve guarantees quick closing and delayed opening.

The slewing gear brake valve has secondary pressure limiting valves for the protection of the cylinder or the motor. If not actuated the pressure limiting valves are set to 370 bar opening pressure. When actuated, the pressure is reduced to 135 bar to retain the minimum braking torque.

3 Characteristics

- Opening the drain valve does not depend on the load
- Cushioning units on drain valve
- Integrated secondary pressure valves
- All valve seats are hardened
- Prefill valves for using closed main control unit in central position

4 Hydraulic Diagram



Connections:

ASt	Inlet
BSt	Inlet
AZ	Cylinderport
BZ	Cylinderport
T	Tank

5 Technical Data

5.1 General

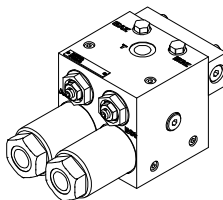
Installation position:	Any
Weight:	11 kg
Opening Pressure	
Valve:	320 bar
Connections:	
ASt, BSt	M22×1.5
AZ, BZ, T	M18×1.5

5.2 Hydraulics

Tank pressure:	< 3 bar
Input volume flow:	< 15 l/min
Hydraulic fluid:	Mineral oil (HL, HLP) conforming with DIN 51524, other fluids upon request
Hydraulic fluid temperature range:	-20 – +80 °C
Environmental temperature:	< +50 °C
Viscosity range:	2.8 – 500 mm ² /s
Contamination grade:	Filtering conforming with NAS 1638, class 9, with minimum retention rate $\beta_{10} \geq 75$

Slewing Gear Brake Valve 15 l/min

534.012.102.9



5.3 Standards

The following standards are to be observed because of the surface temperatures on the slewing gear brake valve:

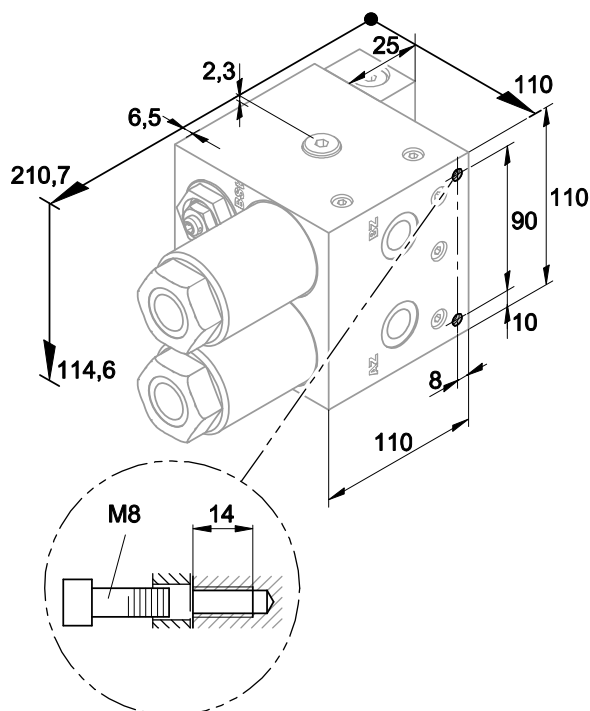
- EN 563
Temperatures on surfaces that can be touched.
- EN 982
Safety-technical requirements for fluid-technical systems and their components.

6 Installation

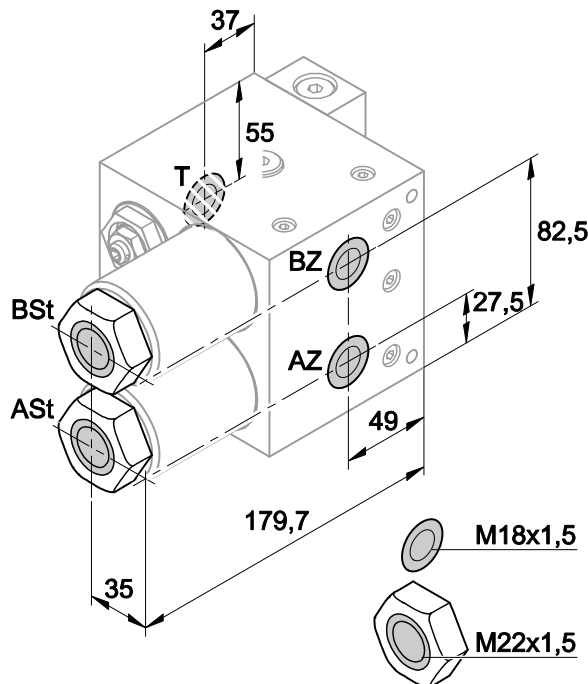
General Information

- Observe all installation and safety information of the construction machine manufacturer.
- Only technically permitted changes are to be made on the construction machine.
- The user has to ensure that the device is suitable for the respective application.
- Application exclusively for the range of application specified by the manufacturer.
- Before installation or deinstallation, the hydraulic system is to be depressurized.
- Settings are to be made by qualified personnel only.
- Opening is only to be performed with the approval of the manufacturer, otherwise the warranty is invalidated.
- No responsibility is taken for the correctness of these installation recommendations, the functionality and the technical details of the construction machine must be checked.

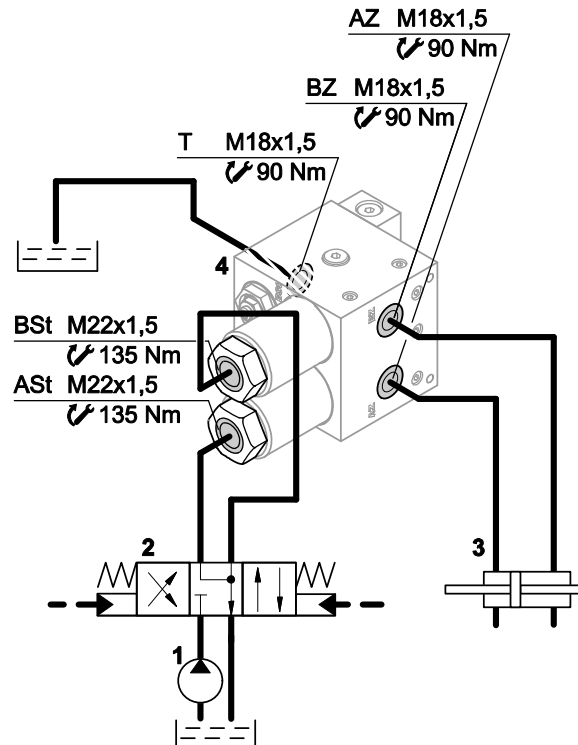
6.1 Installation



6.2 Connection Dimensions



6.3 Connection Recommendations



- 1 Pump
- 2 Main control
- 3 Cylinder
- 4 Slewing gear brake valve